

# A nimal C are

The Reasons We Care . . .





# USDA, APHIS, Animal Care

---

The Animal Welfare Act:  
Provisions, Processes and Partnerships

# Animal Welfare Act

---

1. To insure that animals intended for use in research facilities or for exhibition or for use as pets are provided humane care and treatment



# Animal Welfare Act

---

2. To assure the humane treatment of animals during transportation in commerce, and....



# Animal Welfare Act

---

3. To protect the owners of animals from the theft of their animals by preventing the sale or use of animals which have been stolen.





# Animal Care Mission

---

- The mission of AC is to provide leadership in establishing standards of humane care and treatment of animals, and to achieve compliance with those standards through inspections, education and cooperative efforts.

# Presentation Topics

---

- What Is Regulated
- How We Regulate



# What's Regulated Under the AWA?

---

- What Activities are Regulated
- What Species are Regulated
- Licensing and Registration



---

Regulated Species

+

= AWA Jurisdiction

Regulated Activity

---

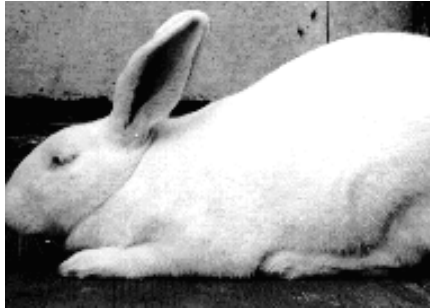


+



# Animals Regulated Under the AWA

---



# Animals NOT Regulated Under the AWA

---



# Birds?





# Activities Regulated under the AWA

---

- Commercial Dealers
- Public Exhibition
- Biomedical Research
- Commercial Transportation

# Commercial Dealers

---

- Class A - Breeders
- Class B – Brokers



# Commercial Dealers

---

- Wholesale vs. Retail
- Includes exotics
  - And Auctions



# Public Exhibition

---

- Zoos
- Educational Exhibits
- Animal Acts
- Circuses
- Marine Mammals



# Biomedical Research

---

- Experimentation
- Teaching
- Testing



# Commercial Transportation

---

- Air
  - And
- Ground



- Includes commercial transport of private pets

# Activities NOT Regulated

- Food, Fur or Fiber
- Retail Pet Sales
- Racing and field trials
- Purebred dog and cat shows



# Wild or Exotic but Exempt

---

- Private Pets
- Hunting/Game Preserve
- Sanctuary
- Reptiles/Amphibians



# Wild or Exotic and Regulated

---

- Zoos and roadside zoos
- Sales except hunting
  - Or agriculture
- Animal Acts
- Petting Zoos



# Farm Activities

---

Exempt:

Food or Fiber  
Agricultural  
Research



Regulated:

Public Exhibition  
Biomedical Research





# Farm Animals

---

- AWA Definition
- **Farm animal** means any domestic species of cattle, sheep, swine, goats, llamas, or horses, which are normally and have historically, been kept and raised on farms in the United States, and used or intended for use as food or fiber, or for improving animal nutrition, breeding, management, or production efficiency, or for improving the quality of food or fiber. This term also includes animals such as rabbits, mink, and chinchilla, when they are used solely for purposes of meat or fur, and animals such as horses and llamas when used solely as work and pack animals.

# Farm Animals

---

When used in regulated activity

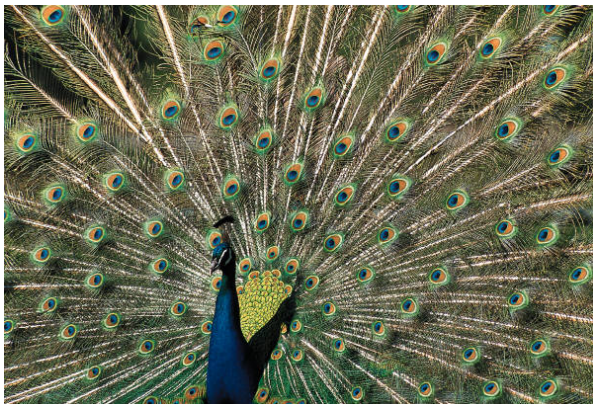


# Rats, Mice and Birds.....

---

Term "Animal" excludes:

Birds, rats of the genus *Rattus*  
and mice of the genus *Mus*  
bred for use in research.....



# Animal Fighting Ventures

---

- Prohibited under the AWA
- Investigation/ Enforcement  
OIG (and other law enforcement)



# *A*nimal *C*are

The Reasons We Care . . .



# Animal Care Program

---



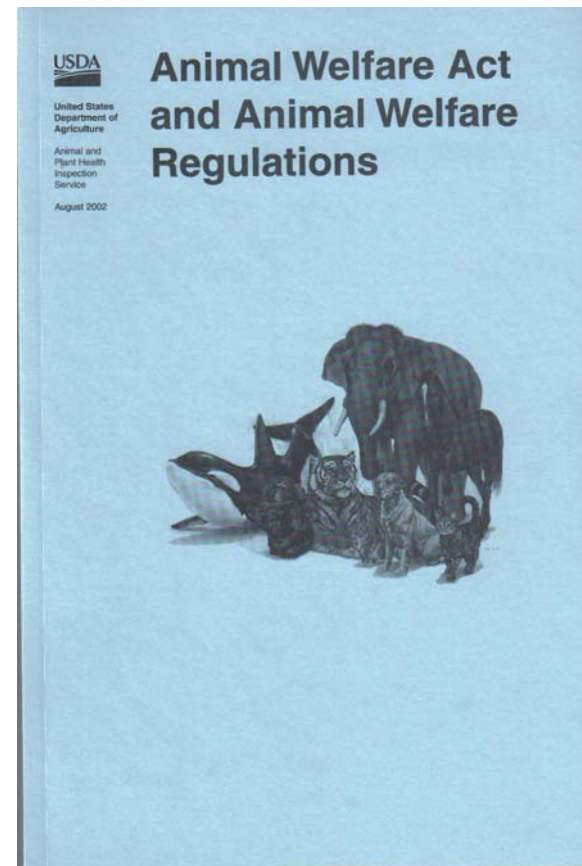
- Inspection Process
- Inspection Reports
- Inspectorate
- A Few Numbers



# Inspection Process

---

- Based on the AWA Regulations
- Routine Unannounced Inspections
- Frequency of Inspection Based on Risk



# Inspections

---

- Animals
- Facilities
- Husbandry and care
  - exercise for dogs
  - environmental enrichment
- Traveling Units
- Transport Enclosures
- Records



# Inspection Report

---

- Central Database
- Narrative Reports
- Only Non-Compliant Items are Cited
  - ✓ tied to section of the AWAR



# Inspectorate

---

- 105 Inspectors
- 11 Supervisory Animal Care Specialists
- 2 Regional Offices





# Inspector Support

---

- 2 Regional Animal Care Specialists
- 3 Taxon Specialties
- 5 HQ Staff Specialists



# Licensees and Registrants 2005

---

- Dealers = 6046
- Exhibitors = 2560
- Research = 1097
- Transport = 462
- Total = 10,165 (14,035 sites)



# Inspections 2005

---

- Dealers = 11,057
- Exhibitors = 5,456
- Research = 2,063
- Transportation = 1,379
- Searches = 650
  
- Total > 19,950



# Compliance Enforcement

---

- Administrative Act
  - ✓ no criminal penalties
- Must Give Notice and Opportunity to Correct
- Due Process



# Enforcement Tools

---

- Warnings
- Civil Penalties
  - ✓ \$3,750 per violation
- License Suspension
- License Revocation



# Enforcement Numbers 2005

---

- 97% satisfactory facilities

- >14,000 total sites
- 450 open investigations/cases

- Case resolutions

- insufficient evidence – no action
- official warning
- civil penalty, suspension, revocation

- Total Civil Penalties = \$1,100,000



# Confiscation

---

- Animal Suffering
- Result of violation of the AWA
- Animals placed permanently



# State – Federal Partnerships

---

- Information Sharing
  - inspection reports
  - investigation report
  - itineraries
- Joint Inspections
- Coordinated Enforcement Actions
- Educational Opportunities





# Contacting Animal Care

---

- Western Regional Office: 970-494-7478
- Eastern Regional Office: 919-855-7100
- Website:  
[http://www.aphis.usda.gov/animal\\_welfare/](http://www.aphis.usda.gov/animal_welfare/)

# A nimal C are

The Reasons We Care . . .

